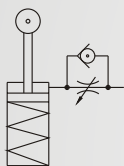


Symbol



Features

- * Stopper cylinder utilizes the top roller spring return as a stopper for work carrier.
- * It is usually applicable to work carrier positioning and stop.
- * It is often used for conveyor line.



How to order

SC

Stopper cylinder

32

Bore size

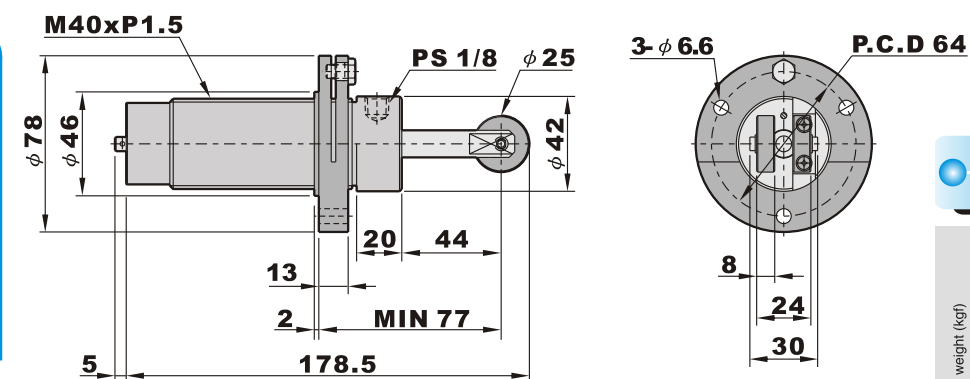
32	$\phi 32$
----	-----------

B

30

Stroke

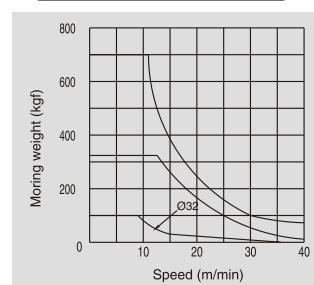
Dimensions



Specifications

Bore size	φ 32
Port size	1/8"
Fluid	Compressed air
Acting	Single acting
Operation	Roller type
Operating pressure range	2 ~ 9.9 kgf/cm ²
Max. operating pressure	15 kgf/cm ²
Cushion	NBR
Lubrication	Not required
Body material	Brass or aluminum alloy
Ambient temperature	5℃ ~ 50℃
Weight	1350g

● Allowance stop chart



— Loading chart

